

Breaking Up Is Hard to Do!

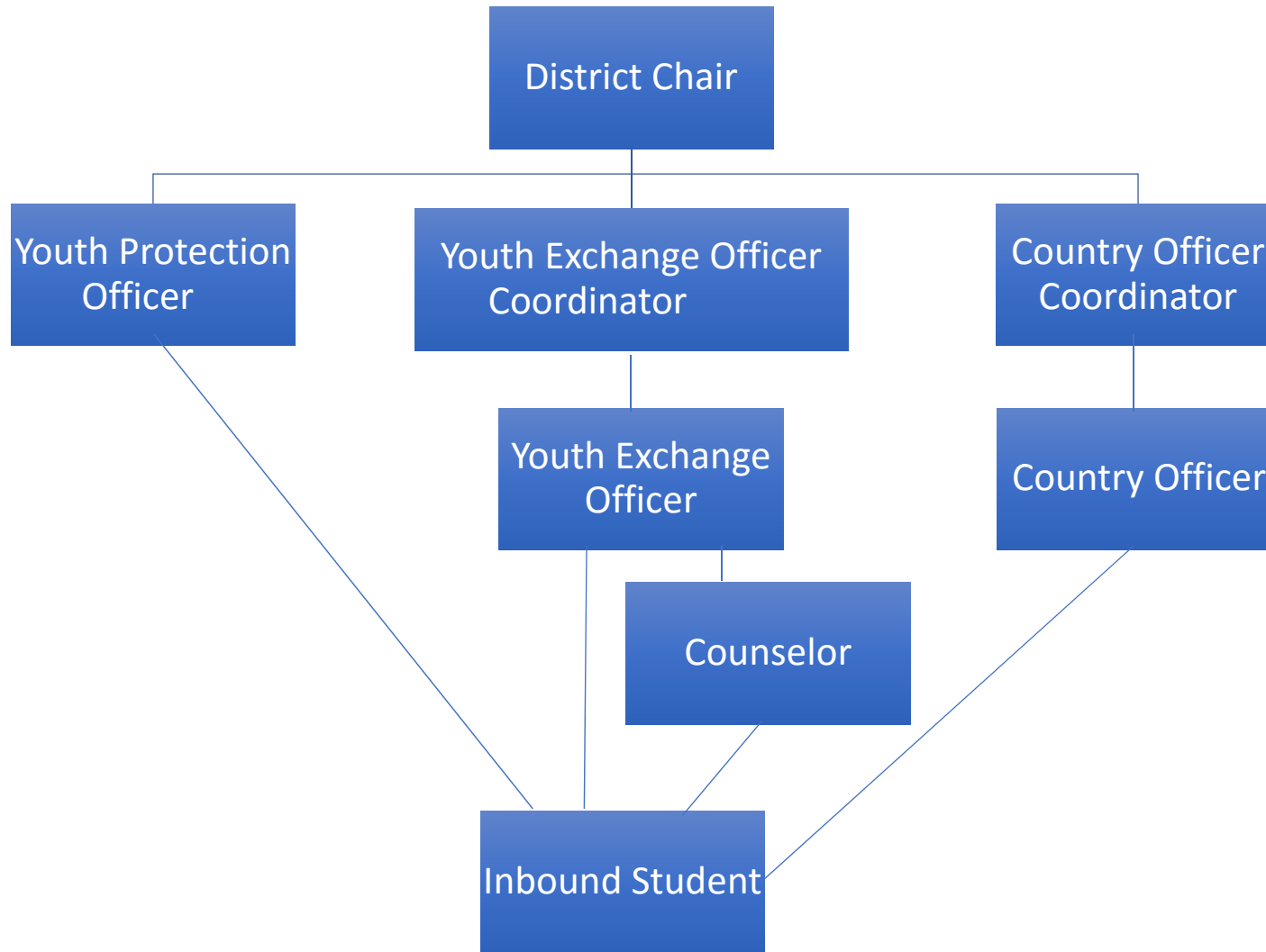
A CIT Approach to Early Returns



n the beginning...



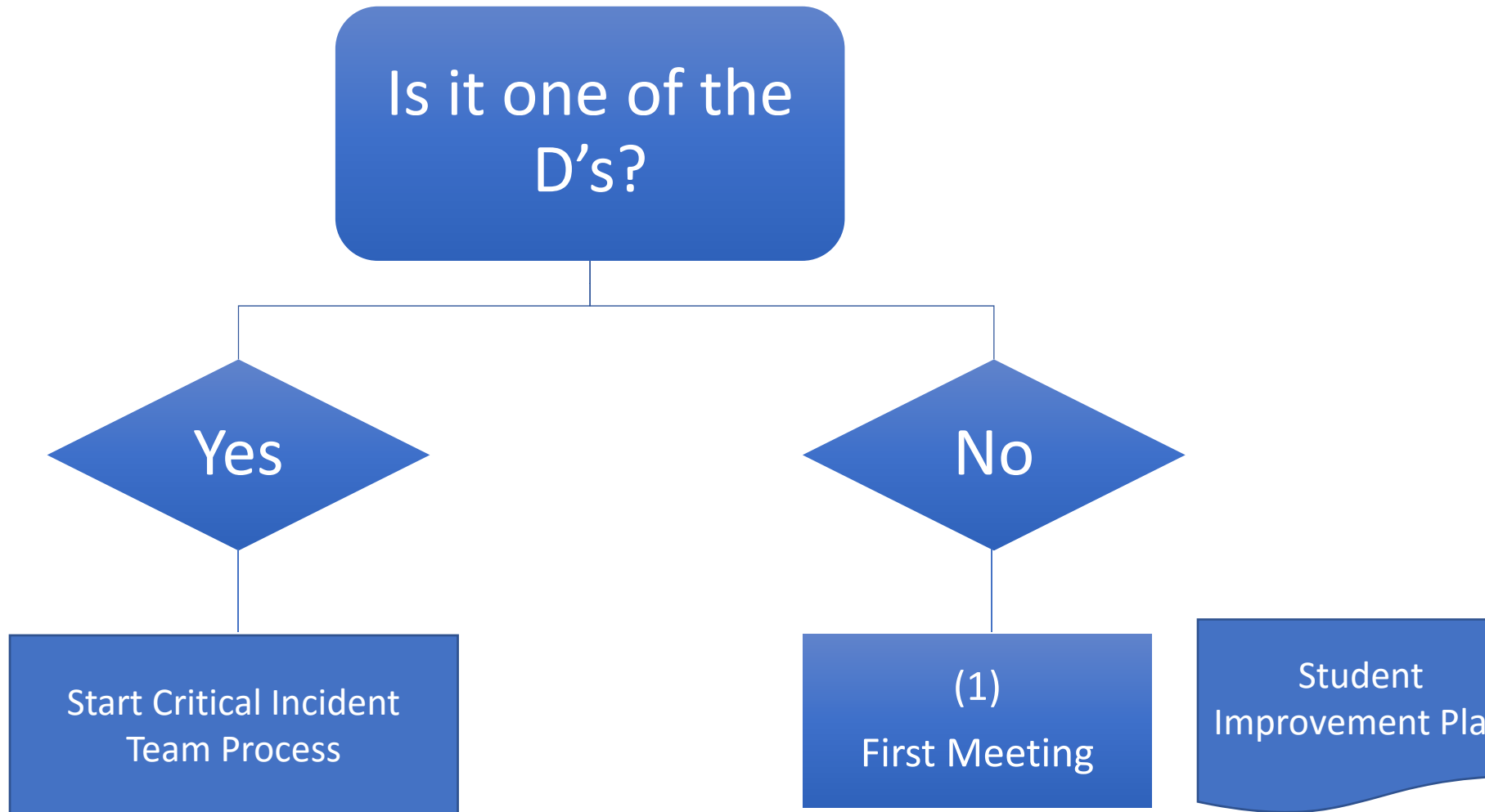
North Star Simplified Organization



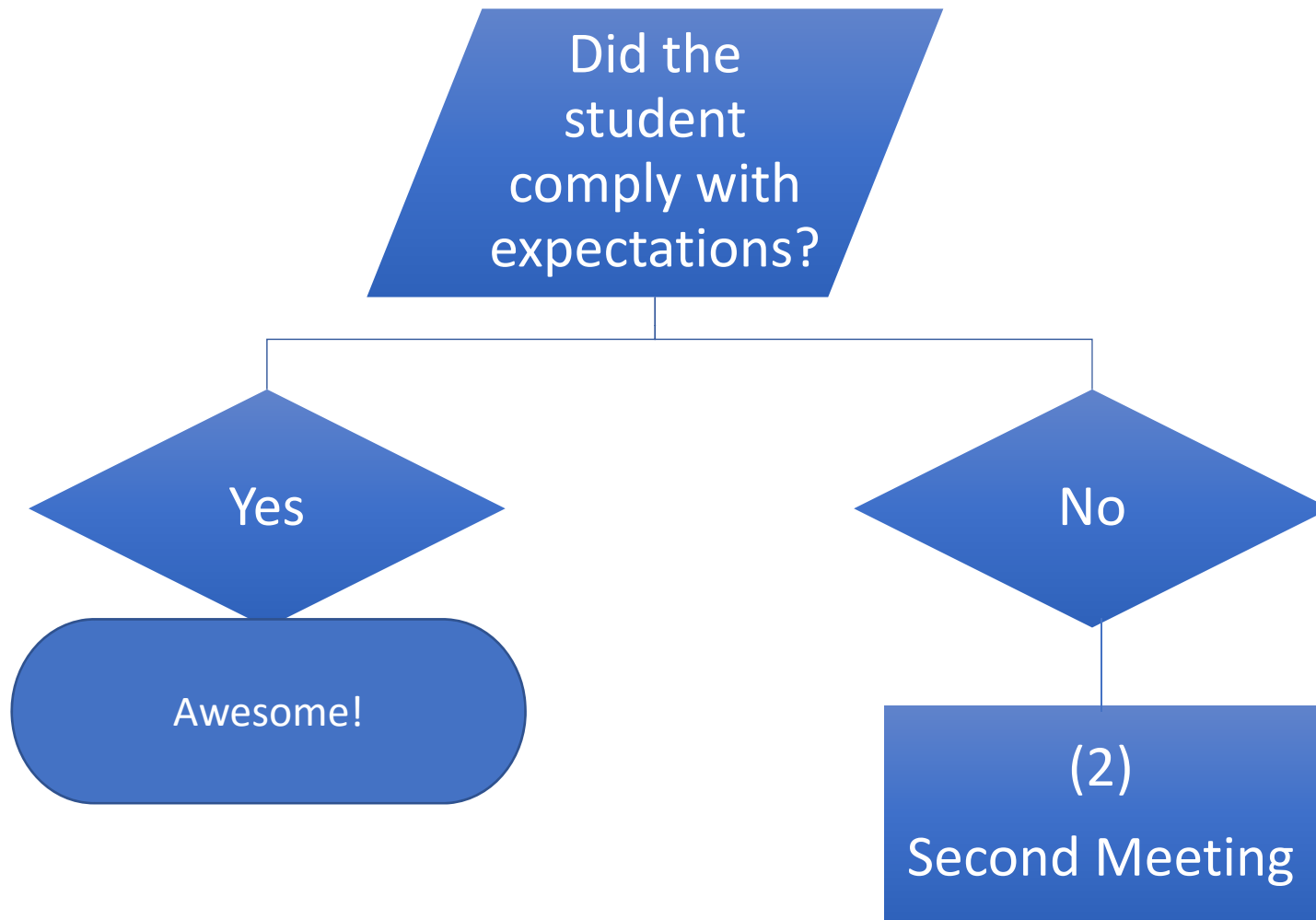
Guiding Principles

1. The student must always be kept **safe**.
2. We want the student to have a **successful** exchange year.
3. We will **support the student** so that he or she can have a successful exchange year.
4. We will **support the club and host families** so that they, too, have a successful year with the student.
5. All matters will be kept **confidential** until directed otherwise.

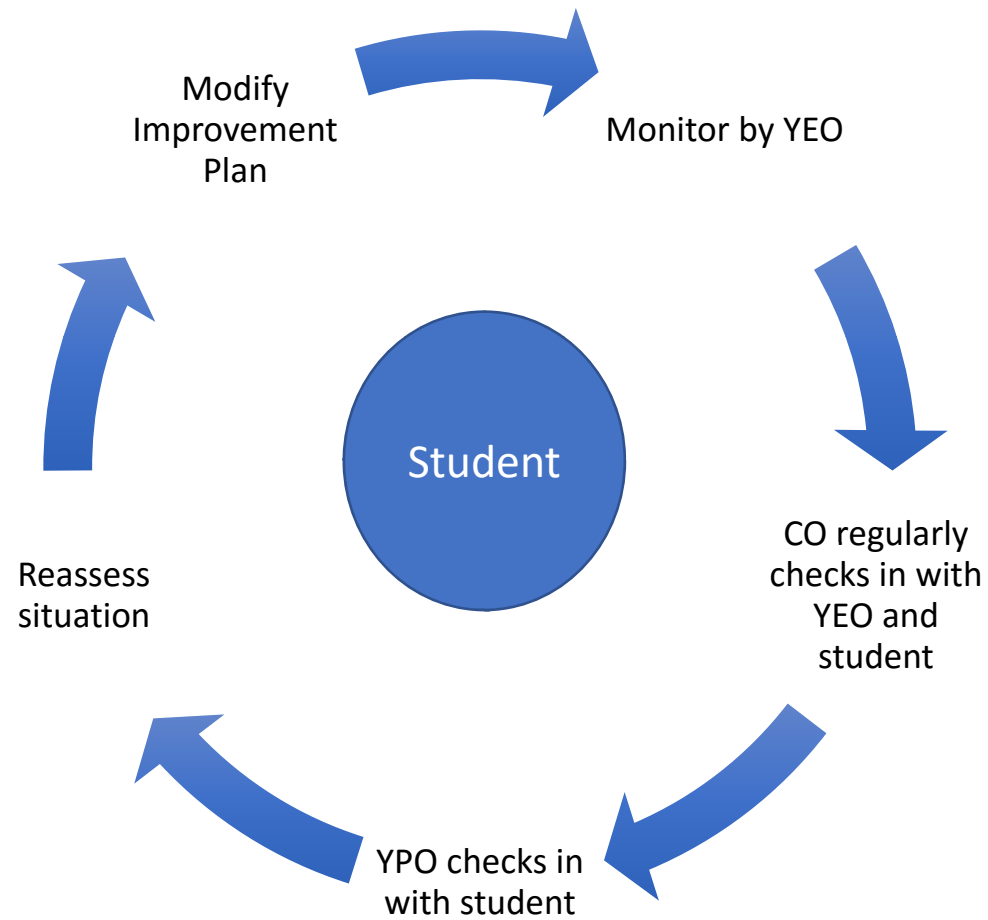
An Incident (Breaking a "D," Behavior, Health) Occurs...



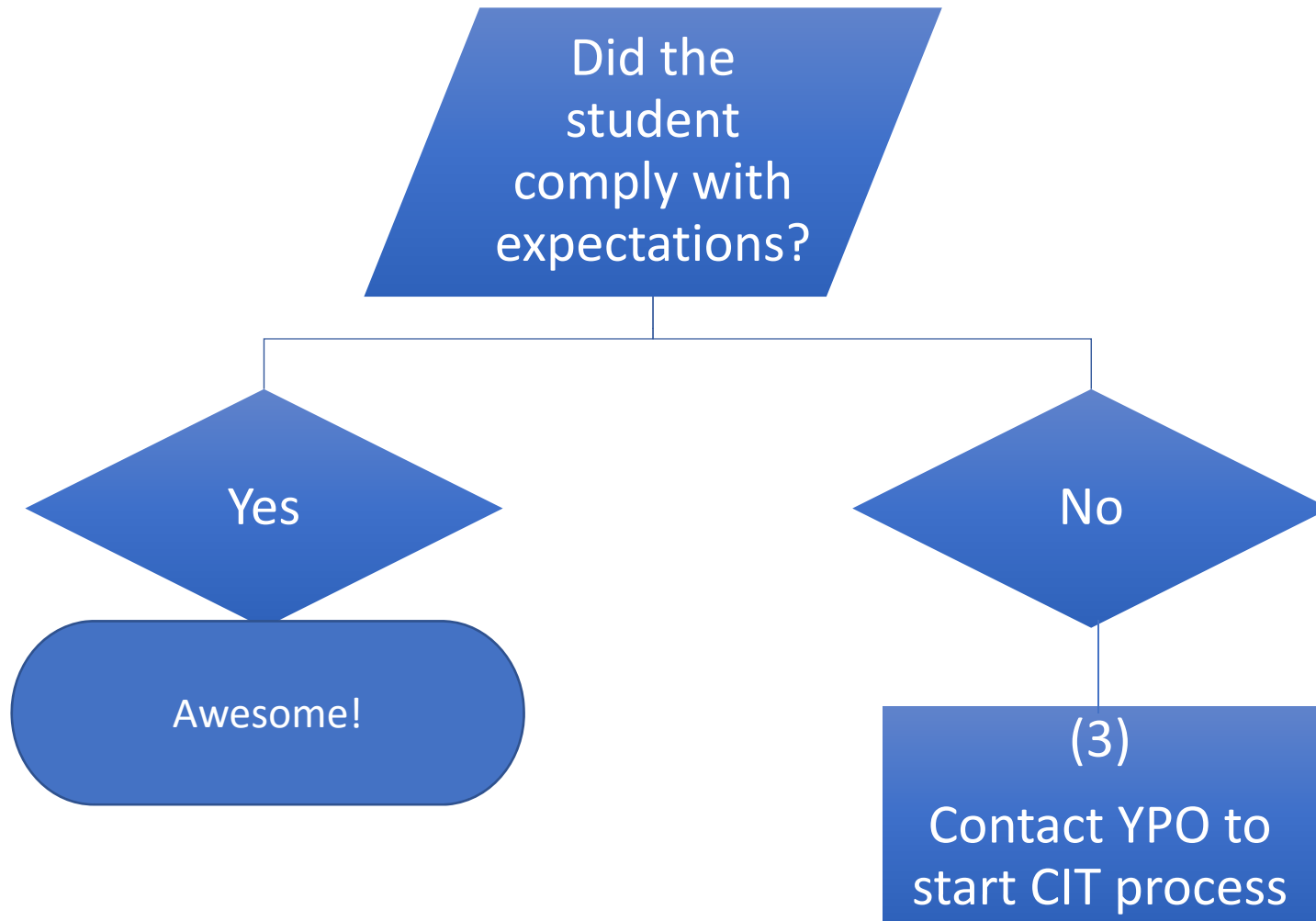
After the First Meeting...



After the Improvement Plan...



After the Second Meeting...



After the Critical Incident Team Meeting...

Critical Incident Team Meeting

```
graph TD; A[Critical Incident Team Meeting] --> B[Student continues in the exchange program with additional supports.]; A --> C[Student is sent home.];
```

Student continues in the exchange program with additional supports.

Student is sent home.

Thank you!

Jennifer Dunn-Foster and Vicki Dilley